

# StoCleyer B

Resin brick slips optimised for  
insulation systems

## Facade



StoCleyer B is a quick and easy solution for creating insulated facades with an authentic brick look.

With more than 130 surfaces across seven groups, StoCleyer B opens up a wide range of design possibilities. The material properties of the resin brick slips, which have been optimised specifically for insulation systems, enable your drafts to be transformed into efficient and reliable solutions. And all this regardless of whether the resin brick slips are being used on an external wall insulation system or a rainscreen cladding facade.

Cover photo reference:

**MyLoft World Fashion Center, Amsterdam, NL**

**Building owner:** CPO MyLoft – WFC, Amsterdam, NL

**Design:** Architectenburo Brink & Fler, Dronten, NL

**Execution:** Haase Bouw, Rijssen, NL

**Sto expertise:** StoTherm Classic®; StoCleyer B, customised surface;

**StoSignature, Texture:** Rough 1

**Photo:** Norbert Duijvelshoff, Tiel, NL

It should be noted that the details, illustrations, general technical information, and drawings contained in this brochure are only general proposals and details which describe the functions. They are not dimensionally accurate. The applicator/customer is independently responsible for determining the suitability and completeness for the construction project in question. Neighbouring works are only described schematically. All specifications and information must be adjusted or agreed in the light of local conditions and do not constitute work, detail or installation plans. The technical specifications and product information included in the Technical Data Sheets and system descriptions/approvals must be observed.



# Contents



## StoCleyer B



- 04 StoCleyer B:  
**Resin brick slips optimised for insulation systems**
- 06 StoCleyer B:  
The contemporary solution for brick-slip facades
- 08 StoCleyer B: Curved slip facade
- 10 StoCleyer B: Range
- 14 StoCleyer B: Tried and tested



# StoCleyer B: Resin brick slips optimised for insulation systems

06 StoCleyer B:

The contemporary solution for brick-slip facades

08 StoCleyer B: Curved slip facade

10 StoCleyer B: Range

14 StoCleyer B: Tried and tested

StoCleyer B is a quick and easy solution for creating insulated facades with an authentic brick look. With more than 130 surfaces across seven groups, StoCleyer B opens up a wide range of design possibilities. The material properties of the resin brick slips, which have been optimised specifically for insulation systems, enable your drafts to be transformed into efficient and reliable solutions.

And all this regardless of whether the resin brick slips are being used on an external wall insulation system or a rainscreen cladding facade.

**MyLoft World Fashion Center, Amsterdam, NL**  
Building owner: CPO MyLoft – WFC, Amsterdam, NL  
Design: Architectenburo Brink & Fleer, Dronten, NL  
Execution: Haase Bouw, Rijssen, NL  
Sto expertise: StoTherm Classic®; StoCleyer B,  
customised surface; StoSignature, Texture: Rough 1  
Photo: Norbert Duijvelshoff, Tiel, NL



# StoCleyer B: The contemporary solution for brick-slip facades

StoCleyer B resin brick slips, which have been optimised for facade insulation systems, make it incredibly easy to combine the powerful look of a brick-slip facade with contemporary thermal protection.

It takes a lot of time and money to create insulated brick-slip facades. Bonding brick slips in an insulation system provides a cost-effective and structurally straightforward alternative to double-leaf construction types. Our StoCleyer B resin brick slips are the perfect example of this theory in practice. The extremely lightweight and flexible material, 90% of which is made up from mineral components, can be used not only on all our external wall insulation systems (StoTherm) but also on StoVentec R rainscreen cladding facades. Standard application of the associated insulation system is unaffected and continues in the same way.

The low material thickness of 4 to 8 mm opens up additional design possibilities. Combination with external renders or malleable StoDeco facade elements is possible without the need for complicated details. Field demarcation joints, which take time to install and spoil the look of the facade, are not required to compensate for thermal influences either. The result is a modern brick-slip facade which will grow old gracefully.

## Bonding of StoCleyer B



Bonding and pointing in a single application cycle. The bonding mortar used to apply StoCleyer B can then easily be used to seal the flanks with the cladding. Done!

## All benefits at a glance



### Simple application

- Standard application of the insulation system
- No field demarcation joints



### Quick

- No drying times between bonding and pointing
- StoCleyer B is easy to cut to size with a utility knife



### Perfect results

- Hand-crafted, prefabricated surface
- Traditional material appearance for facades (bricks)



EWIS RSC

### Free system selection

- Can be used on all StoTherm systems and StoVentec R

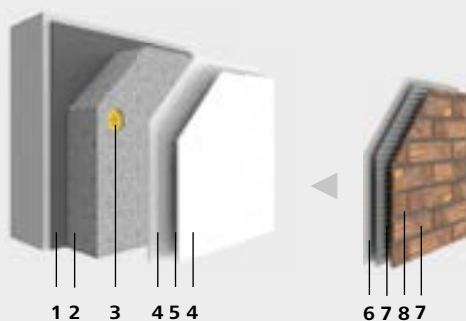
StoCleyer B can be used on all Sto insulation systems; it does not require complex additional measures such as field demarcation joints. Similarly, no drying time is required between bonding and pointing. A utility knife is all you need to cut the StoCleyer B resin brick slips to size.

## StoCleyer B as part of an overall system

### StoTherm External wall insulation systems

Our tried-and-tested systems are different because they combine insulant with organic or mineral base coat. As a result, you can provide a flexible response to the diverse requirements of your project without having to forego the security of a tested solution with technical approval.

- StoCleyer B is compatible for full-surface use on all StoTherm systems
- The thickness of the material makes it ideal for combination with StoSignature (external renders) and StoDeco



#### Insulating layer

- 1 — Bonding
- 2 — Insulant (EPS in this case)
- 3 — Fixing

#### Reinforcing layer

- 4 — Base coat
- 5 — Reinforcement

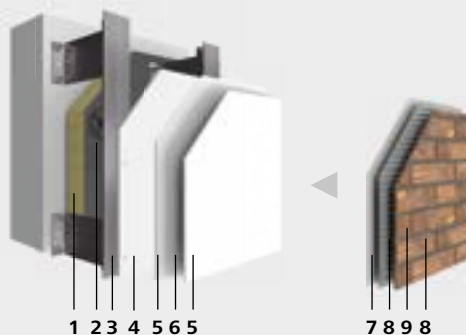
#### Material layer

- 6 — Intermediate coat (optional)
- 7 — Bonding and pointing
- 8 — StoCleyer B cladding

### StoVentec Rainscreen cladding facades

The StoVentec system combines the physical advantages of a ventilated rainscreen cladding facade system with virtually unlimited colour shade, texture, and material options.

- StoCleyer B can be used to create modern brick-slip facades on rainscreen cladding facade systems
- The highly flexible material enables curved surfaces to be created



#### Insulating layer

- 1 — Insulant: mineral wool with nonwoven fabric backing
- 2 — Fixed with insulation fasteners

#### Carrier layer

- 3 — Sub-construction (wall brackets and T-profiles)
- 4 — Carrier board, screw fixing

#### Reinforcing layer

- 5 — Base coat
- 6 — Reinforcement

#### Material layer

- 7 — Intermediate coat (optional)
- 8 — Bonding and pointing
- 9 — StoCleyer B cladding



# StoCleyer B: Curved slip facade

At the MyLoft apartment complex in Amsterdam, StoCleyer B resin brick slips have been combined with prefabricated insulation elements for maximum design freedom in the creation of a malleable curved brick-slip facade.

Virtually no other major city is so strongly characterised by its brick architecture across the ages than the Dutch metropolis of Amsterdam. When architecture firm Brink & Fler was commissioned to design a five-storey apartment complex for building owners consortium MyLoft, bricks were bound to be the material of choice for the building's facade. StoCleyer B resin brick slips were used to combine the required brick appearance with maximum design freedom. The result showcases the advantages of this contemporary solution for brick-slip facades.

The planners had already used StoCleyer B successfully in a previous project for MyLoft. They were able to take even fuller advantage of the design freedoms created by the material in the new building on the Schipluidenlaan. The result is a perforated facade with a strong grid pattern which on closer inspection gives way to a more refined appearance with gently curved horizontal and vertical sections stepping forwards or backwards in waves. The stretcher bond facade also really draws the eye with its lively play of colours from the resin brick slips in combination with an incredibly slim stone format.

The possibility of designing a malleable facade offered by the use of the insulant were also put to use to turn the design concept into reality. Based on the architects' design, the insulating material was prefabricated to match the curved surface of the facade and bonded to the supporting external wall. Once the insulation layer had been reinforced and subsequently allowed to dry, the bonding

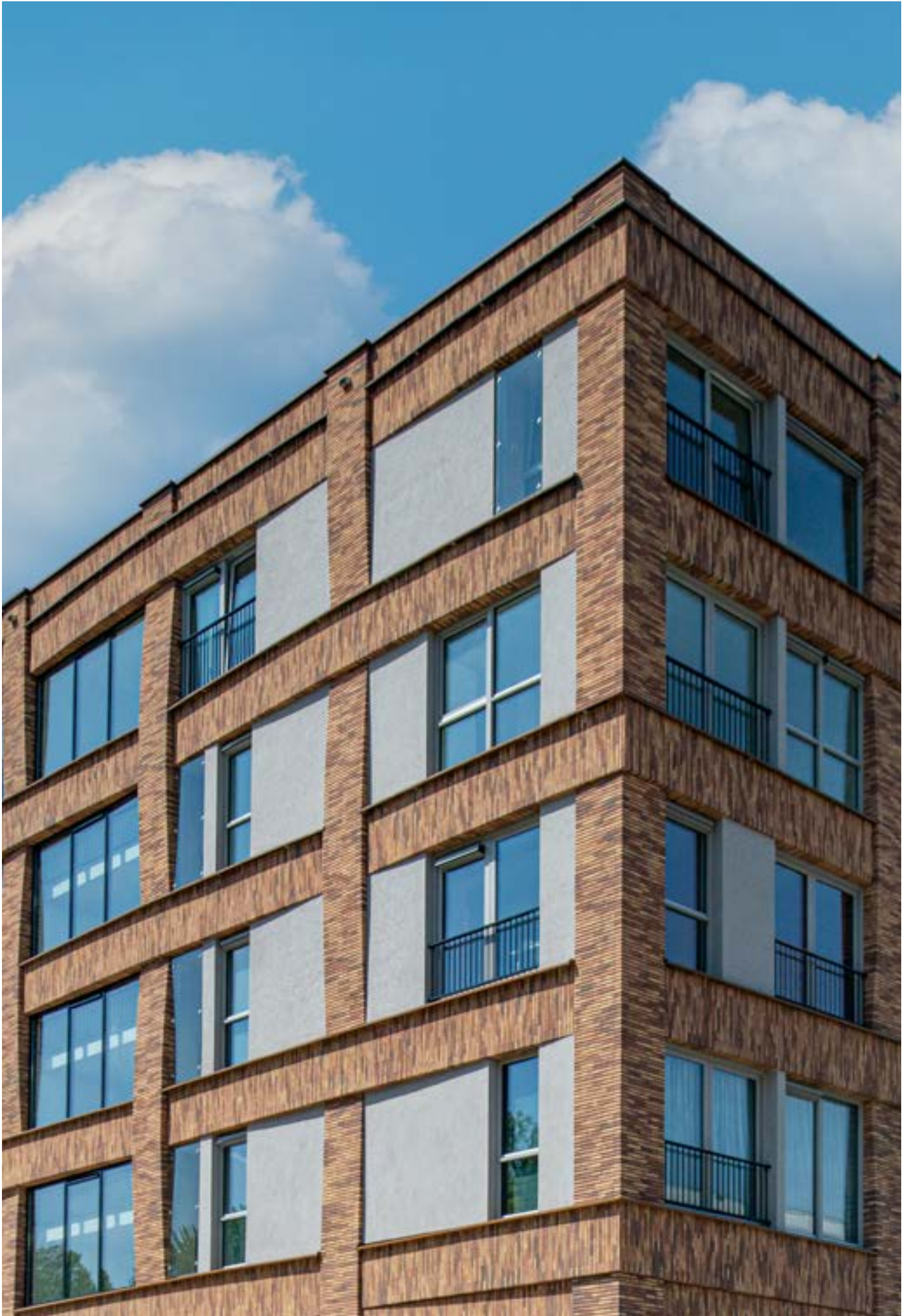
mortar for the StoCleyer B resin brick slips was applied. After this, installation work could get under way. The flexibility of the material made it possible to clad the rounded surface with ease. The corners were formed using corner resin brick slips that had been prefabricated specifically for this purpose. Following the initial hardening of the bonding mortar, pointing work was completed in a single application cycle which involved smoothing the bonding mortar and sealing the flanks of the resin brick slips.

Image on right:  
**MyLoft World Fashion Center, Amsterdam, NL**  
Building owner: CPO MyLoft – WFC, Amsterdam, NL  
Design: Architectenburo Brink & Fler, Dronten, NL  
Execution: Haase Bouw, Rijssen, NL  
Sto expertise: StoTherm Classic®; StoCleyer B, customised surface; StoSignature, Texture: Rough 1  
Photo: Norbert Duijvelshoff, Tiel, NL

Image below:  
Close-up of StoCleyer B corner resin brick slip







# StoCleyer B: Range

## StoCleyer B 11 000 (11 000–11 999)



StoCleyer B 11 130



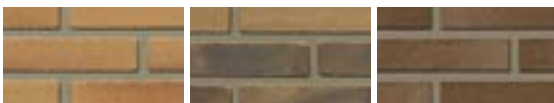
11 132      11 140      11 150



11 160      11 180      11 181



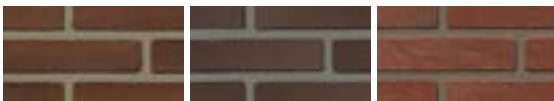
11 220      11 230      11 460



11 470      11 490      11 710



11 720      11 800      11 810



11 820      11 830      11 850



11 860      11 920

and many other colour shades

## StoCleyer B 21 000 (21 000–21 999)



StoCleyer B 21 130



21 140      21 450      21 460



21 470      21 700      21 750



21 760      21 770      21 800



21 820      21 830      21 840



21 850      21 870

Our StoCleyer B range includes more than 130 bricks, which we have divided into seven groups for a better overview. All resin brick slips are available in standard brick formats along with the associated corner solutions.

### StoCleyer B 31 000 (31 000–31 999)



StoCleyer B 31 129



31 130

31 140

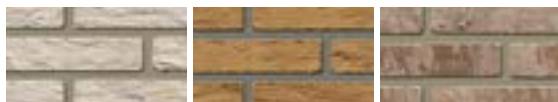
31 150



31 160

31 180

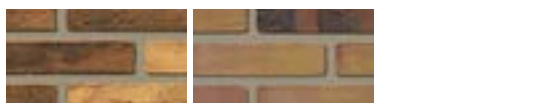
31 185



31 190

31 490

31 500



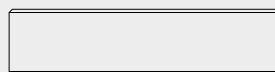
31 720

31 730

#### Standard formats:



StoCleyer B normal format: 240x71 mm



StoCleyer B thin format (DF): 240x52 mm



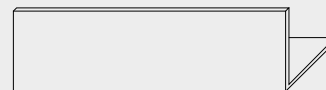
StoCleyer B Dutch Waal format (WL) = 210x50 mm

#### Corner resin brick slip



StoCleyer B corner resin brick slip normal format: 240/115x71 mm

#### Lintel resin brick slip



StoCleyer B lintel resin brick slip NF: 240x115/71 mm

- All StoCleyer B resin brick slips are available in standard brick formats along with the associated corner solutions
- Material thickness: 4–8 mm
- Custom mixtures of bricks are available on request



# StoCleyer B: Range

## StoCleyer B 41 000 (41 000–41 999)



StoCleyer B 41 000



41 140

41 860

## StoCleyer B 51 000 (51 000–51 999)



StoCleyer B 51 220

**StoCleyer B 61 000 (61 000–61 999)**



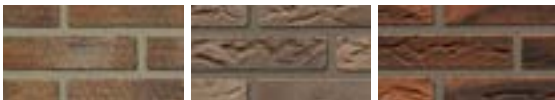
StoCleyer B 61 130



61 140      61 200      61 460



61 470      61 480      61 490



61 710      61 740      61 810



61 820      61 830      61 860



61 870      61 880      61 890



61 910      61 940      61 950

**StoCleyer B 71 000 (71 000–71 999)**



StoCleyer B 71 130



71 140      71 170      71 190



71 200      71 230      71 460



71 480      71 520      71 530



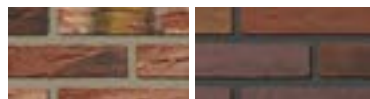
71 550      71 710      71 730



71 760      71 770      71 790



71 841      71 850      71 870



71 890      71 912

and many other colour shades



# StoCleyer B: Tried and tested



**Groene Linten, Haarlem, NL**

Building owner: Pré Wonen, Velsbroek, NL

Design: Klous + Brandjes Architecten bna,  
Haarlem, NL

Execution: VBK Noord-West B.V., Schagen, NL

Sto expertise: StoTherm Wood; StoCleyer B 71500

Photo: Ronald Tilleman Photography, Rotterdam, NL

A multitude of possibilities: the following examples of projects demonstrate the many different ways in which StoCleyer B can be used to create traditional brick-slip facades and showcase the innovative ideas for facade design involving facade insulation systems which can be made real.



**De Wever, Gennepe, NL**

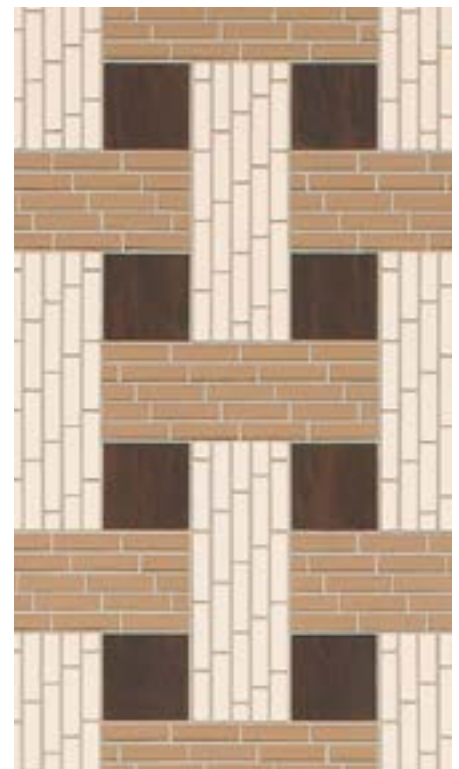
Building owner: Mooiland Wonen, Grave, NL

Design: 2.0 Architecten, Venlo, NL

Execution: IJsselmonde VOF, Rotterdam, NL

Sto expertise: StoTherm Classic®, StoCleyer B, StoEcoShape

Photo: Bona Pictura, Cuijk, NL



**Reykjavikplein, Utrecht, NL**

**Building owner:** Stichting Pensioenfonds van de Metalektro, Den Haag, NL

**Design:** diederendirrix B. V., Eindhoven, NL

**Execution:** De Vries en Verburg Bouw B. V., Stolwijk, NL

**Sto expertise:** StoTherm Classic® (timber stud construction type);

StoCleyer B 61740

**Photo:** Ronald Tilleman Photography, Rotterdam, NL







**Ter Plaeten UpKot Gent, BE**

**Building owner:** Upgrade Estate, Gent, BE

**Design:** Baeyens & Beck ir. architecten, Gent, BE

**Execution:** Hobe Belgie NV, Houthalen-Helchteren, BE

**Sto expertise:** StoTherm Classic®; StoCleyer B, customised surface; StoSignature, Texture: Rough 1

**Photo:** co2images, Christian Overdeput, Gent, BE



**Beeke van Belzen office building, Middelburg, NL**

**Building owner:** Jan Beeke/Sander van Belzen, Middelburg, NL

**Design:** Joos Nijssse Architectuurburo, Middelburg, NL

**Execution:** Willems Stucadoor & Afbouwbedrijf VOF, Duizel, NL

**Sto expertise:** StoTherm Classic®; StoCleyer B 21130; StoSignature Rough 1

**Photo:** Viorella Luciana photography, Middelburg, NL



**NSG Groenewoud, Nijmegen, NL**

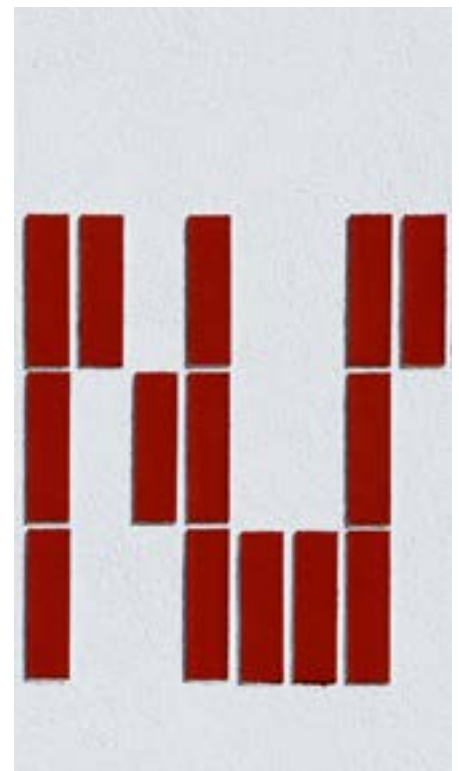
Building owner: Nijmeegse Scholengemeenschap, Nijmegen, NL

Design: Van den Berg Architecten, Houten, NL

Execution: Willems Stucadoor & Afbouwbedrijf VOF, Duizel, NL

Sto expertise: StoTherm Classic®; StoCleyer B, customised surface; StoSignature Rough 1

Photo: Bona Pictura, Cuijk, NL



**Kielort 16-18, Norderstedt, DE**

Building owner: Bauverein der Elbgemeinden eG,  
Hamburg, DE

Design: ABJ.Planungsgesellschaft mbH, Hamburg,  
DE

Execution: Hans-Jürgen Rath GmbH, Hohenaspe,  
DE

Sto expertise: StoTherm Classic®; StoCleyer B  
11800; StoSignature, Texture: Rough 1

Photo: Fotodesign Christoph Gebler, Hamburg, DE





**Wiebelstraße/Drieschweg, Hamburg, DE**  
Building owner: Bauverein der Elbgemeinden eG, Hamburg, DE  
Design: henningerarchitekt, Gesellschaft von Architekten und Ingenieuren mbH, Hamburg, DE  
Execution: Preusse Baubetriebe GmbH, Hamburg, DE  
Sto expertise: StoTherm Vario;  
StoCleyer B, customised surface;  
StoSignature, Texture: Rough 1  
Photo: Fotodesign Christoph Gebler, Hamburg, DE





## Headquarters

### **Sto SE & Co. KGaA Market Development**

Ehrenbachstrasse 1  
79780 Stühlingen  
Germany

Phone +49 7744 57-1131  
Fax +49 7744 57-2428  
infoservice.export@sto.com  
www.sto.com

### **Sto Werkstatt London**

Phone +44 20 7222 2221  
werkstatt@sto.com  
werkstatt.sto.com

## Your Contact

